



# WHITMAN

Environmental · Engineering · Energy · EH&S Compliance · Waste Management

Corporate Headquarters: 100 Franklin Square Drive, Suite 200, Somerset, NJ 08873 • (732) 390-5858  
Lehigh Valley Office: 2231 Walbert Avenue, Allentown, PA 18104 • (484) 274-6863

www.whitmanco.com

## Remediation & Construction Field Services

### Overview

Whitman offers the capabilities of a full-service, turn-key construction company with extensive experience working with residential, commercial, industrial and government clients.

*We pride ourselves on being a “different kind of construction and contracting team”.*

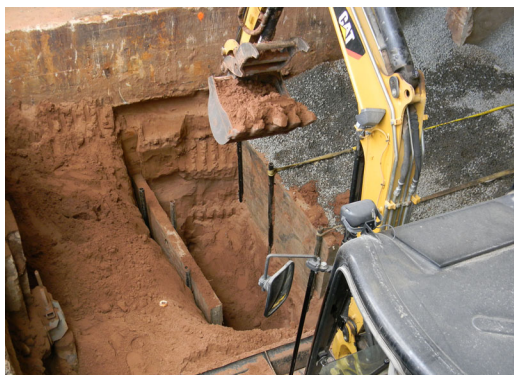
Our construction staff is fully trained on the complexities of challenging environmental regulations, and we are sensitive to the details and specific procedures required by agency regulators and Licensed Site Remediation Professionals (LSRPs). This presents our clients with a more professional and technical approach to construction management, and also provides a smooth transition between design and field implementation for difficult environmental remediation projects.

Our construction team can also work seamlessly with our in-house professional engineers, environmental experts and LSRPs through the structural and remedial design-phase of the project. The synthesis of these teams working together in-house enables Whitman to assist our clients through every phase of remediation from concept, to design, through field completion and final case closure. In addition, our construction team can work with a client's independent design professional as needed, or team with a firm to implement large scale field construction remediation projects.



### Our Services

- Innovative & Advanced In-Situ Remediation / Injections
- Turn-key Soil & Groundwater Remediation Systems
- Soil Excavation & Removal
- Dewatering & Structural Support System Installation
- Engineering Control (Soil Cap) Installation
- Vapor Intrusion Mitigation / Sub-Slab Depressurization System Installation & Pilot Testing
- Underground Storage Tank Removal
- Construction Management Services
- Conventional Hydraulic Control / Pump-and-Treat & Soil Vapor Extraction (SVE) & Air Sparging Systems



For more information regarding these services, please contact:

**Dave Villar, Field Services Manager**

(732) 390-5858 • [dvillar@whitmanco.com](mailto:dvillar@whitmanco.com)